

Biometric

Biometric Application Solutions





CrossChex

Time Attendance and Access Control Management System

CrossChex is an intelligent management system of access control and time attendance devices, which is applicable to all Anviz access controls and time attendances. The user-friendly and interactive design makes this system very easy to operate, the powerful function makes this system realize the management of department, staff, shift, payroll, access authority, and exports different time attendance and access control reports, satisfying different time attendance and access control requirements in different complicated environments.



Desktop

For small & medium Business T&A, A&C all in one system



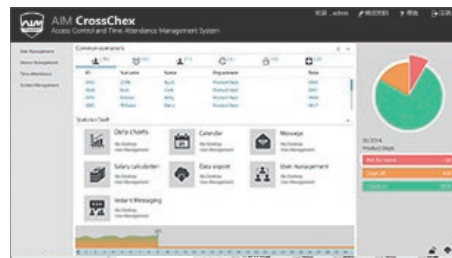
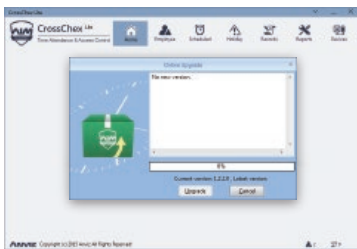
Professional

For enterprise web base management system



Cloud

For global cloud system



Device Management

Quick add device by network automatic search, Configure Anviz Biometric device and real time monitoring device connection.



Access Control Management

Control up to 32 access groups and 16 time zones, door state monitoring and remote door control by administrator.



Shift Management

Support daily/hourly shift schedule and intelligent shift schedule for different type of the employee. Flexible to meet enterprise management requirements.



Report Management

Daily/individual summary and report, work hour displayed by hourly category. support CSV and xlsx export. Support report format design.



Human Resources Management

Multi levels administrator and department settings, Mail push report the Administrator.



Mobile Management

Mobile APP function makes the time attendance and records check everywhere.

T5 (Integrated Into Your System)



- STMicroelectronics® 32-Bit High Speed CPU
- Management Card Registration
- Max 1,000 Users, Max 1,000 Template, 50,000 Records
- Virtual Keypad by Cards for User ID Management
- Infrared Finger Detect & Wakeup Sensor
- RS485, Mini USB, TCP/IP, Wiegand Out
- FP, Card, FP+Card
- Standard EM Card, Optional Mifare Card
- IP54

T5S (Slave Reader)



- STMicroelectronics® 32-Bit High Speed CPU
- Infrared Finger Detect & Wakeup Sensor
- RS485
- FP
- Optional EM Card/Mifare Card
- IP54

Standalone Access Control

T5 Pro (World Most Compact)



- STMicroelectronics® 32-Bit High Speed CPU
- Management Card Registration
- Max 1,000 Users, Max 1,000 Template, 50,000 Records
- Infrared Finger Detect & Wakeup Sensor
- RS485, Mini USB, TCP/IP
- Direct Lock Control, Wiegand Out, Door Sensor
- Standard EM Card, Optional Mifare Card
- IP54

P7 (PoE Standalone Access Controller)



- STMicroelectronics® 32-Bit High Speed CPU
- Max 3000 Users Max 3000 Template, 50,000 Records
- Touch Activated Keypad
- Fingerprint Reader, Touch on Activation
- RS485, Mini USB, TCP/IP
- PoE (IEEE802.3af and IEEE802.3at)
- Group, Time Zone, Direct Lock Control, Scheduled Bell, Relay Out, Wiegand In/Out, Door Sensor
- Standard EM Card, Optional Mifare Card
- Optional Outdoor Waterproof Cover
- IP53

VF30 (Global Best Seller)/VP30 (Compatible)



- VF30/VP30
- VF30
- VP30

- STMicroelectronics® 32-Bit High Speed CPU
- Max 2,000 Users, Max 2,000 Template, 50,000 Records
- Max 20,000 Users, 200,000 Records
- Fingerprint Reader, Touch on Activation
- RS485, Mini USB, TCP/IP
- Group, Time Zone, Direct Lock Control, Scheduled Bell, Message Function, Relay Out, Wiegand In/Out, Doorbell, Door Sensor
- Optional EM Card/Mifare Card
- Card, ID+PW, PW+Card
- Standard EM Card, Optional Mifare Card
- Optional Outdoor Waterproof Cover
- IP53

T60 (Classical & Powerful)



- STMicroelectronics® 32-Bit High Speed CPU
- Max 2,000 Users, Max 2,000 Template, 50,000 Records
- Voice Prompt
- RS485, Mini USB, TCP/IP, Optional GPRS
- Group, Time Zone, Direct Lock Control, Scheduled Bell, Dual Relays Out, Wiegand In & Out, Doorbell, Door Open Sensor
- Standard EM Card, Optional Mifare Card
- Optional Outdoor Waterproof Cover
- IP53

TC550 (All In One)



- STMicroelectronics® 32-Bit High Speed CPU
- Max 2,000 Users, Max 2,000 Template, 50,000 Records
- RS232, Mini USB & USB Memory, TCP/IP
- 8 Customizable T&A States, 6-digit Work Code
- Group, Time Zone, Message Function, Relay Out, Scheduled Bell, Wiegand In & Out
- Standard EM Card, Optional Mifare Card

OC500 (All In One RFID)



- STMicroelectronics® 32-Bit High Speed CPU
- Max 20,000 Users, 200,000 Records
- RS232, Mini USB & USB Memory, TCP/IP
- 8 Customizable T&A States, 6-digit Work Code
- Group, Time Zone, Message Function, Relay Out, Scheduled Bell, Wiegand In & Out
- Standard EM Card, Optional Mifare Card

OA1000 Pro (Industry Design Award)



AFOS

Waterproof
Dust proof
Scratchproof

- Dual Core 1.0GHZ High Speed Processor
- Anviz AFOS Fingerprint Sensor
- 10,000(1:N), 200,000(1:1), 200,000 Logs
- Linux, 3.5" Samsung TFT LCD, 1.3MP camera
- Display Fingerprint & User Picture, Snapshot
- Employee Self-Service Record Inquiry
- RS232, RS485, USB Memory, TCP/IP, SD Card (4G)
- Dual Relays Out, Wiegand In & Out, 16 Groups, 32 Time Zones
- Standard EM Card, Optional HID iClass Mifare Card Reader/WiFi/3G

OA1000 Mercury Pro (Live Scan)



Wet Fingerprint
Dirty Fingerprint
Oil Fingerprint

- Dual Core 1.0GHZ High Speed Processor
- Lumidigm Mercury Live Scan Fingerprint Module
- 10,000(1:N), 200,000(1:1)(BioNANO Algorithm); 1,000 (1:N) 50,000 (1:1)(Lumidigm Algorithm), 200,000 Logs
- Linux, 3.5" Samsung TFT LCD, 1.3MP camera
- Display Fingerprint & User Picture, Snapshot
- Employee Self-Service Record Inquiry
- RS232, RS485, USB Memory, TCP/IP, SD Card (4G)
- Dual Relays Out, Wiegand In & Out, 16 Groups, 32 Time Zones
- Standard EM Card, Optional Mifare Card Reader/WiFi/3G

OA1000 URU Pro (URU Solution)



360°

- Dual Core 1.0GHZ High Speed Processor
- Digital Persona U.are.U 4500 Fingerprint Module
- 10,000(1:N), 200,000(1:1)(BioNANO Algorithm); 1,000(1:N), 50,000(1:1)(UARE.U Algorithm), 200,000 Logs
- Linux, 3.5" Samsung TFT LCD, 1.3MP camera
- Display Fingerprint & User Picture, Snapshot
- Employee Self-Service Record Inquiry
- RS232, RS485, USB Memory, TCP/IP, SD Card (4G)
- Dual Relays Out, Wiegand In & Out, 16 Groups, 32 Time Zones
- Standard EM Card, Optional Mifare Card Reader/WiFi/3G

Standalone Access Control



M5 (Outdoor Reader/Controller)

- STMicroelectronics® 32-Bit High Speed CPU
- Metal Case, Water & Dust Proof
- Max 2,000 Users, Max 2,000 Template, 50,000 Records
- Fingerprint Reader, Touch on Activation
- RS485, USB Device, TCP/IP, Wiegand Out
- FP, Card
- Standard EM Card Card
- Tamper Alarm
- IP65, IK10



M3 (Outdoor RFID Solution)

- STMicroelectronics® 32-Bit High Speed CPU
- Metal Case, Water & Dust Proof
- Max 2,000 Users, 50,000 Records
- Touch Activated Keypad
- RS485, USB Device, TCP/IP, Wiegand Out
- Direct Lock Control
- Standard Mifare RFID Card
- Tamper alarm
- IP65

Time Attendance

C2 Pro (Professional Fingerprint & Card Terminal)



- Linux Platform
- Max 5000 Users, Max 5000 Templates 100K Records
- Dual-Core 1GHz Processor
- Less than 0.5s Comparison
- 3.5" TFT LCD
- Fingerprint Reader, Touch on Activation
- Infrared Optical Imaging Technology
- Optional RFID Reader Modules (HID iClass, ALLEGION or ANVIZ)
- TCP/IP & WiFi, RS232
- Inbuilt WebServer
- 1 Relay for Belling and Connecting to Access Control System

V10 (Art Design)



- Desktop
- Touch Active fingerprint sensor
- Max 1,000 Users, Max 1,000 Template, 50,000 Records
- 192*64 LCD Display
- Human Voice Prompt.
- Mini USB, Wi-Fi communication (802.11b/g/n)
- USB Memory
- Power Over USB/DC 5V
- 8 Customizable T&A States, 6-digit work Code
- Timing Alarm

V30 (Flexible & Easy)



- Wall Mounting
- Touch Active fingerprint sensor
- Max 1,000 Users, Max 1,000 Template, 50,000 Records
- 192*64 LCD Display
- Human Voice Prompt.
- Mini USB, Wi-Fi and TCP/IP communication (802.11b/g/n)
- USB Memory
- Power Over USB/DC 5V
- 8 Customizable T&A States, 6-digit work Code
- Timing Alarm

EP300 (The Best Combination of Function and Price)



- STMicroelectronics® 32-Bit High Speed CPU
- Unique Fingerprint Positioning Design
- Max 2,000 Users, Max 2,000 Template, 50,000 Records
- Mini USB & USB Memory, TCP/IP
- Optional Rechargeable 1100mAh Battery
- Power Over USB/DC 5V
- 8 Customizable T&A States, 6-digit Work Code

D100 (Most affordable)



- Desktop
- STMicroelectronics® 32-Bit High Speed CPU
- Max 2,000 Users, Max 2,000 Template, 50,000 Records
- Mini USB
- Power Over USB or DC 5V
- 8 Customizable T&A States, 6-digit Work Code

D200 (Super Slim & Flexible)



- Desktop or Wall Mounted
- STMicroelectronics® 32-Bit High Speed CPU
- Max 2,000 Users, Max 2,000 Template, 50,000 Records
- Mini USB
- Rechargeable 1100mAh Battery
- Power Over USB / DC 5V
- 8 Customizable T&A States, 6-digit Work Code

A300 (World Popular Model)



- STMicroelectronics® 32-Bit High Speed CPU
- Max 2,000 Users, Max 2,000 Template, 50,000 Records
- RS232, Mini USB & USB Memory, TCP/IP
- Relay Out (For Scheduled Bell)
- Power Over USB or DC 5V
- 8 Customizable T&A States, 6-digit Work Code
- Optional EM Card/Mifare Card
- Short Message

TC530 (The GPRS T&A Terminal)



- Max 2,000 Users, Max 2,000 Template, 50,000 Records
- Mini USB & USB Memory, TCP/IP
- Relay Out (For Scheduled Bell)
- Power Over USB or DC 5V
- 8 Customizable T&A States, 6-digit Work Code
- EM Card, Optional Mifare Card/GPRS
- Short Message

OC180 (Classic, Ultra-thin RFID Time Attendance)



- Max 20,000 Users, 200,000 Records
- Mini USB & USB Memory, TCP/IP
- Power Over USB or DC 5V
- 8 Customizable T&A States, 6-digit Work Code
- 125KHz EM Card
- Inbuilt 1100mAh Rechargeable Battery
- Inbuilt RFID Reader

Iris Recognition System



UltraMatch

- Linux OS
- Dual-Core 1GHz Processor
- 150-2,000 Users, 50,000 Records
- OLED Screen
- TCP/IP, RS485, WiFi
- Inbuilt Webserver, Online Registration
- Wiegand Out
- RFID

Face Recognition System



FacePass Pro

- 500 Users, 100000 Records
- Three Identification Mode: Face, Card, ID+PW
- Energy Saving Auto Wake/Sleep
- Voice and LED Prompt
- Touch Screen
- USB Pen Drive Data Download
- TCP/IP Connectivity
- Webserver

Smart Lock

L100K Series(Home & Business Smart Lock)



L100K



L100KD(KB)



L100K



L100KD



L100KB

- L100K/L100KD(KB)
- L100K
- L100KD(KB)

- Tough, durable, zinc-alloy coated casing
- Touch Active fingerprint sensor
- Intuitive Nixie Tube Display
- 99 Fingerprints, 99 PW
- Single Door Latch
- Reversible Handle
- High Security Deadbolt
- Ultra-low Power Consumption
- Override Keys, 9V Emergency Battery
- FP, PW, Optional Mifare Card
- Mini USB Communication for download
- 4 AA batteries allow for 30,000 times, Low Battery Warning

Modules

SM3000 (Developers and Manufacturers Integration)



- Fingerprint Enrollment, Image Processing
- 5000 Fingerprint Template Storage
- Support Standalone and Online Verification
- Power Supply, TTL/RS232 Available
- Support USB-CDC Interface and Wiegand Output

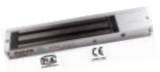
M Bio (Standalone Optical Fingerprint Module)



- Anviz Optical Fingerprint Sensor
- Fingerprint Collection and Verification all in one
- USB Connection, SDK Available for Software Development
- Optional Bluetooth Communication
- Support Standalone and Online Verification

Accessories

AML270



- Voltage: 12/24V DC
- Working Current: 500/250mA
- Holding Force: 250KGS
- Weight: 1.8KGS
- Size: 253*25*48mm

AEL200



- Working Current: 350mA
- Standby Current: 250mA
- Holding Force: 1000KGS
- Weight: 1.05KGS
- Size: 200*35*38mm

AEL201



- Working Current: 650mA
- Standby Current: 250mA
- Holding Force: 1000KGS
- Weight: 1.05KGS
- Size: 200*35*38mm
- Door States Signal Output(DSM)

PoE Splitter



- IEEE 802.3af Standard, Input DC 36V-57V (1 10/100M RJ45 Port)
- Output DC 5V (USB), DC 12V (2 Pin terminal block), MAX 13W
- AUTO Negotiation/AUTO MDI/MDIX
- Circuit Isolation Protection
- Delivers Power Up to 100 Meters
- Dimensions: 102*45*27mm (L*W*H)

U Bio (USB Optical Fingerprint Reader)



- Anviz Optical Fingerprint Sensor
- Accurate Image Capture and Good in Anti-interference, Fingerprint Image of No-distortion, Latent Fingerprint Removal
- USB Connection, SDK Available for Software Development

BioNANO[®] V11

Core Algorithm

Fingerprint - Facial - Iris

BioNANO Core Algorithm

Anviz biometric technologies are widely used in our fingerprint identification, face recognition and iris identification products. As one of our key technological achievements, the biometric identification algorithm BioNANO, was developed in house by our engineers and is now the algorithm used in all Anviz biometric products.



Fingerprint

- Suitable for both wet and dry fingers
- Automatically heals the broken lines in fingerprint images
- Extraction of features in worn fingerprints
- Fingerprints template auto update

- **Anviz Hermetic AFOS Fingerprint Sensor**
Waterproof, dust proof and scratchproof IP65 fingerprint sensor

- **Fingerprint Template Auto Update**
Auto update means the previous lower quality fingerprint template will be automatically replaced by the new higher quality one during fingerprint verification

- **High Speed Matching**
Incredibly fast matching algorithm will complete a 1:1 match less than 0.5 sec and 1:3000 users less than 1 sec.

- **Living Recognition**
Living recognition can get fingerprint data from beneath surface of the skin so that dryness or even damaged or worn fingers create no problems for reliable reads.

- **SC SDK**
Anviz Software Development Kits (SDKs) offer a device communication, template extraction, access control setting and more. They support multiple platforms and language interfaces. Complete with APIs, Anviz SDKs are fully documented and come with sample applications for as-is or modified use.

- **SC EVK**
Anviz provide Evaluation Kit (EVK) for OEM Modules. The EVK offers Mini USB, RS485, RS232, Wiegand, Relay output and support Standalone and USB connection work mode.



Facial

- Non-contact
- Fast speed and easy to use
- Suitable for different lux application

- **Multi-communication Mode**
TCP/IP, USB device, RS485, Wiegand, GPRS, WIFI and so on.

- **Webserver**
Visit the device directly via the network. Setup and search the record from the device.

- **Wide Temperature Circuit Design**
Wide temperature circuit will ensure the device is suitable for different complex environment.

- **Dual Storage**
Dual storage ensures the data is more secure.

- **BioNANO SDK**
BioNano SDKs offer a full spectrum of capabilities, including image capture, template extraction, template matching, identification and more. BioNano SDK support multiple platforms and language interfaces.

- **BioNANO EDK**
Make the Anviz products with greater potential application, Anviz provide the Embedded development kits (EDKs). The Developers extend application base on Anviz product directly. The EDKs support Anviz Linux and WinCE terminal.



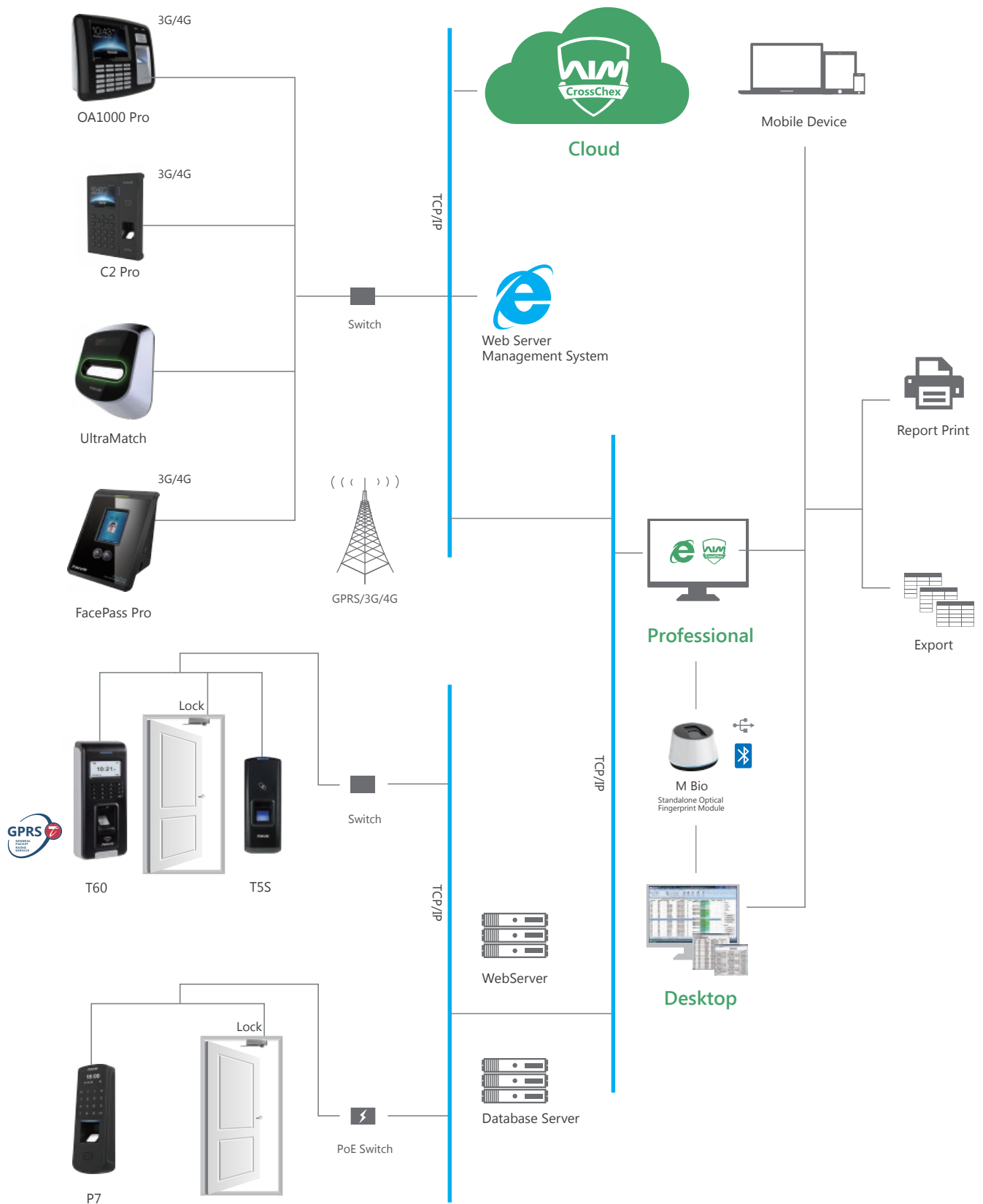
Iris

- No way to fake, highest security
- Most accurate, convenient, and reliable
- Touchless verification, most sanitary



Intelligent Security Solution

Time Attendance | Access Control | Identification



About Anviz

Founded in 2001, Anviz is a global leader in the field of intelligent security including Biometric and RFID. Cutting edge technologies, sophisticated QA system (ISO certified) and worry-free services & support provide our partners with the key of business success.

Anviz dedicates to offer professional and comprehensive security solutions. With the continuously growing demand of public and private security, Anviz announced the surveillance product line which was created based on the innovations of our optical and digital image processing technology.

Combining the high-quality products and cost-effective security solutions, Anviz serves various clients from government, law, retail, industrial, commercial, financial, medical, education, etc.

AGPP Anviz Global Partner Program

AGPP is Anviz Global Partner Program. It is designed for industry-leading distributors, resellers, software developers and system integrators highly qualified in providing intelligent security solutions of Biometric, RFID and Surveillance in targeted vertical markets. The program helps partners build a sustainable business model in a fast-changing environment, where customers require value-added services, focused technical expertise and high levels of satisfaction.



Aggressive
Industry-leading Margins

Priority
Partner Technical Support

Online
Ordering and Private Partner Portal

Partner
Training Provided

Assisted
Marketing Campaign Programs

Preferred
Professional Services

Earned
MDF CO-OP Funds

Customer
Referral and Lead Generation Programs

Warranty

The Anviz Products, enclosed with this Limited Hardware Warranty will in respect of the hardware be free from defects in design, workmanship and materials under normal use for a period of 1, 2 or 3 years from the date of the original purchase ("Warranty Period").

For more Anviz Warranty Service, please visit:



Support

Anviz Technical Support provides efficient assistance for your products. With online support services www.anviz.com/support and Anviz Service One App you can rest assured that you'll receive assistance wherever you are, whenever you need it.

Service One

"Service One" is an application in APP store include in all Anviz technology support and products information:

- 7x24-hour online self service
- Submit any needs and questions anywhere and anytime



Service One

For more information, visit www.anviz.com, or email us sales@anviz.com.

2016© Anviz Global. All Rights Reserved. Due to the consistent improving of the product, this specification and appearance is subject to change without notice.