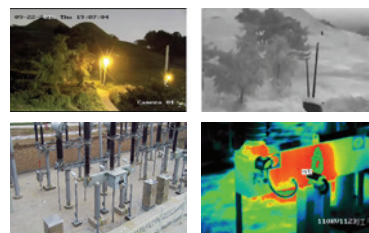
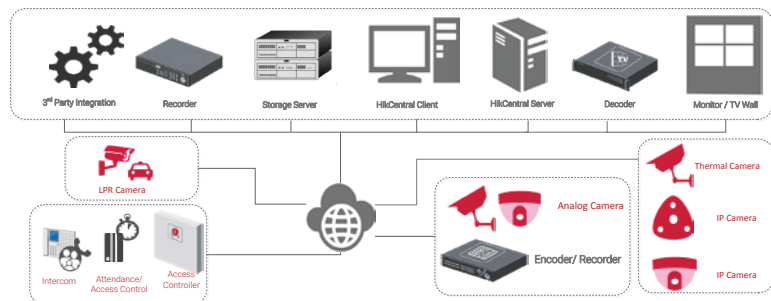




SMART BUILDING SOLUTIONS

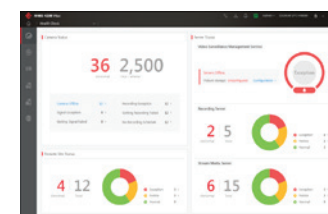
Hikvision smart building solution provides:

- Easy deployable devices with flexible configuration, all video / audio and events accessible via network
- Robust recording, control and event management system with multi-access, multi-layer management
- Third party equipment and system integration capability



Thermal Imaging Camera Systems

- Fixed and PTZ Models
- Bi-Spectrum (Thermal with Visible) Imaging
- 384x288 and 640x512 Resolution Models
- Temperature Exception Alarming, Standard
- Advanced Fire Detection



Device Health Monitoring

- Centralized Dashboard display for system and device status
- Quickly drill down to pinpoint problem device or network segment
- Automatic refresh of equipment status
- Create and export device reports for easy maintenance



Centralized Event Management

- Intuitive central event management across alarm list, alarm based videos, and related map
- Multi-layer map or floor plan with video and control associated
- Easy access and control via web browser, PC Client, or mobile devices

SMART BUILDING SOLUTIONS



Vehicle Access



LPR Camera

- 1080p @ 60fps and detects up to 100 mph
- Physical I/O works with external lights, IR, and inductive loop

Visitor / Employee



LightFighter™ Cameras

- 140dB WDR provides incredible footage for high contrast lighting environments



People Counting Camera

- Dual lens design, 97% accuracy



Intercom & Access Control

- Card, fingerprint, password access
- Indoor and outdoor intercom stations with video

Indoor Security



HD Cameras

- Various form factors, viewing range and feature sets for deployment under all kinds of indoor locations
- Built-in Smart Suite analytics, audio I/O, and Wi-Fi available
- Alarm I/O for external sensor and control signal



Access Control

- Multi-system compatibility with video, fire, and control

Parking



HD Camera / PTZ

- Up to 4K with 36x optical zoom
- Ultra low light with long range IR
- Intrusion/ no-stopping zone alerts / auto tracking
- License plate recognition

Perimeter Protection



PanoVu System

- Up to 16 MP stitched, 360° Panoramic View and auto tracking



Thermal / Optical Dual Lens Camera

- Temperature / Intrusion Detection
- High sensitivity in all weather and lighting conditions



Cameras with Special Housing

- Anti-corrosion and explosion proof

Centralized Video Management



Recorder / Storage

- Blazer Express: Windows-based NVR with advanced camera management and reporting
- Robust video / event live view and storage
- Advanced event searching and playback



HikCentral Management Software

- From basic to large multi-site solutions
- Works with Hikvision devices for essential analytics, event, and map management
- Integrates with third party for end-to-end enterprise solutions



HD Monitors

- Up to 84" – suitable for 24 hour operation
- 1080p and 4K options available